

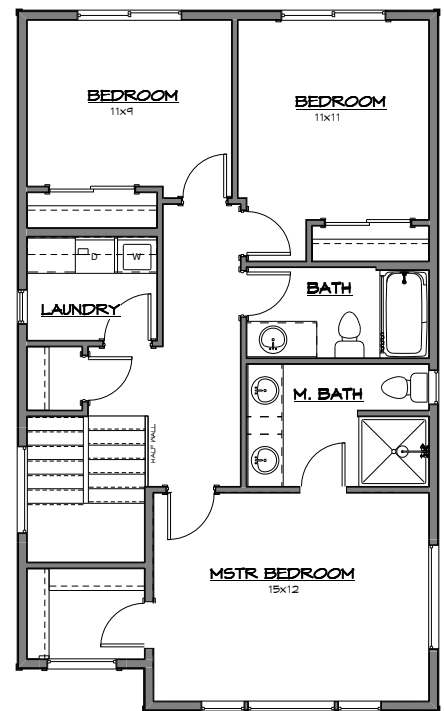
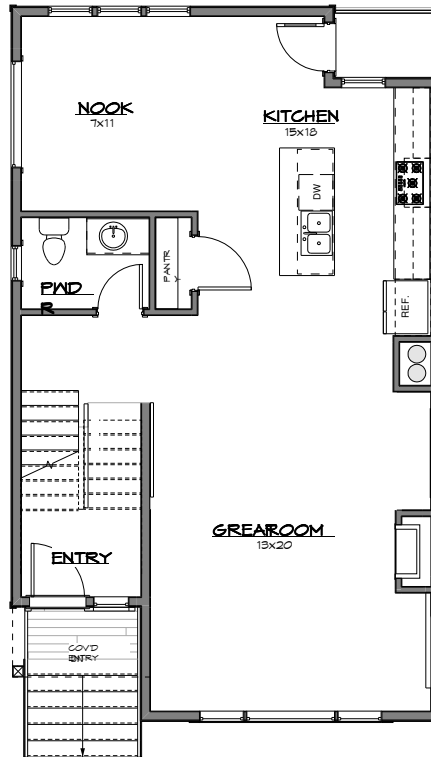
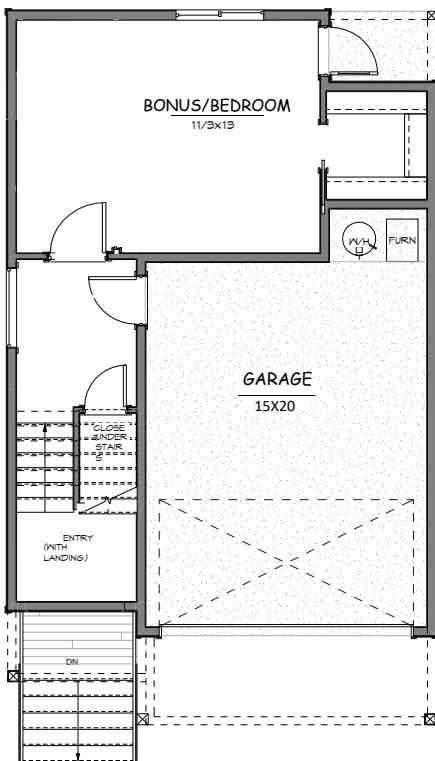
ASH CREEK

Lot 8 - TILLICUM



2168 Sq Ft 4 Bedrooms 2.5 Baths

- Bright, expansive and open great room floor plan featuring fireplace
- Gourmet kitchen offers large pantry with eating bar island and formal dining room
- Versatile additional bonus or bedroom on lower level with walk-in closet
- Abundant storage throughout including large walk-in laundry room



Michelle St. Marie
503.462.4230
michelle@crandallgroup.com

